

FUTV4440B 4 in 1 QAM Modulator



Outline

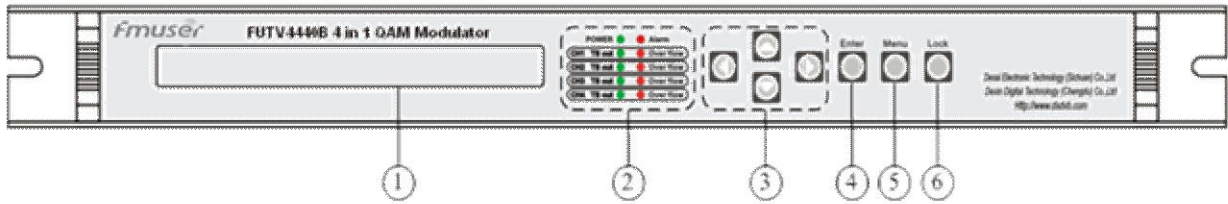
FUTV4440B 4 in 1 QAM is a cost effective integrated QAM modulator newly designed by FMUSER Company. This device is integrated up to 4 channel QAM modulating carrier outputs, in which each carrier has independent signal channel encoding and direct RF output. Therefore, the device is featured with excellent RF performance index. It supports 4 channel ASI inputs (4 QAM (J.83 A/B/C), 4 DVB-S tuner input or 4 DVB-S2 tuner input). Alternatively, this device can take various RF inputs of DVB-S/DVB-C/DVB-S2 signals by installing the relevant build-in tuners. Hence, one PCS 4 in 1 QAM modulator can work as 4 standalone QAM modulators, significantly reducing the network operators' head-end cost. FUTV4440B can also support local and remote control to set its working parameters.

Feature

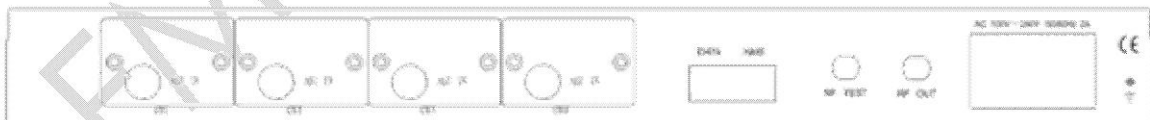
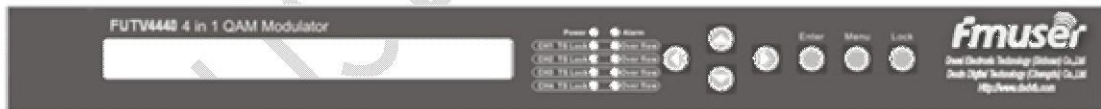
- Fully comply with DVB-C (EN300 429) and ITU-T J.83A/B/C;

- 4 adjacent channel QAM carrier wave
- 4 channels ASI input (4 QAM (J.83 A/B/C), 4 DVB-S tuner input or 4 DVB-S2 tuner input) and support 188/204 byte TS packet
- DVB-S/DVB-S2/DVB-C RF input (optional)
- Support accurate PCR adjusting
- Support five QAM constellation (ITU-T J.83A) modes: 16/32/64/128/256 QAM,
- Support QAM constellation (ITU-T J.83B/ITU-T J.83C) modes: 64 /256QAM
- Symbol rate adjustment range: 5.0Mbps~9.0Mbps
- Support PSI/SI editing function
- RF output range: 30MHz~960MHz in 1.0 kHz step
- RF ATT range: -16dBm~0dBm in 0.5dB step
- Support input de-multiplexing and PSI/SI editing
- Support LCD display and keyboard
- Excellent RF output performance index, MER 40db
- Support network management (NMS/SNMP)

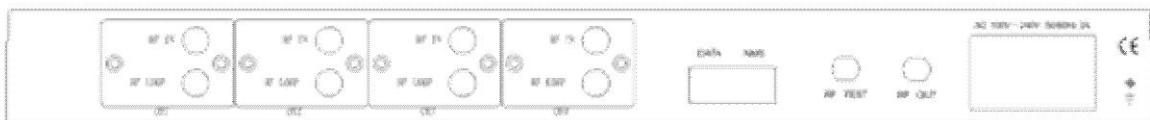
Appearance and Illustration



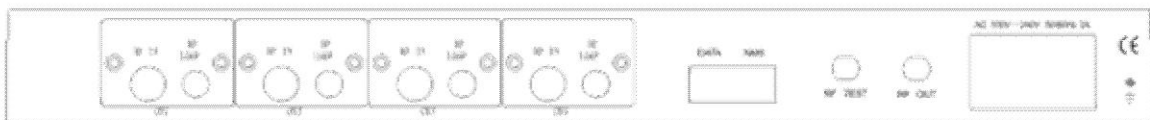
1	LCD Display	
2	Indicator Area	POWER : Power Indicator
		Alarm : Alarming Indicator
		CH1/2/3/4 TS Out : Transportation Stream Indicator
		CH1/2/3/4 Over flow : Over Flow Indicator
3	Up/Down/Left/Right Key	
4	Enter : Confirmation Key	
5	Menu Key	
6	Locking Key	



ASI



-S



-C



J.83 J.83.A (DVB-C) Constellation: 64QAM Symbol Rate: 6.375 Mbps Bandwidth: 8MHz Start Freq: 299 MHz

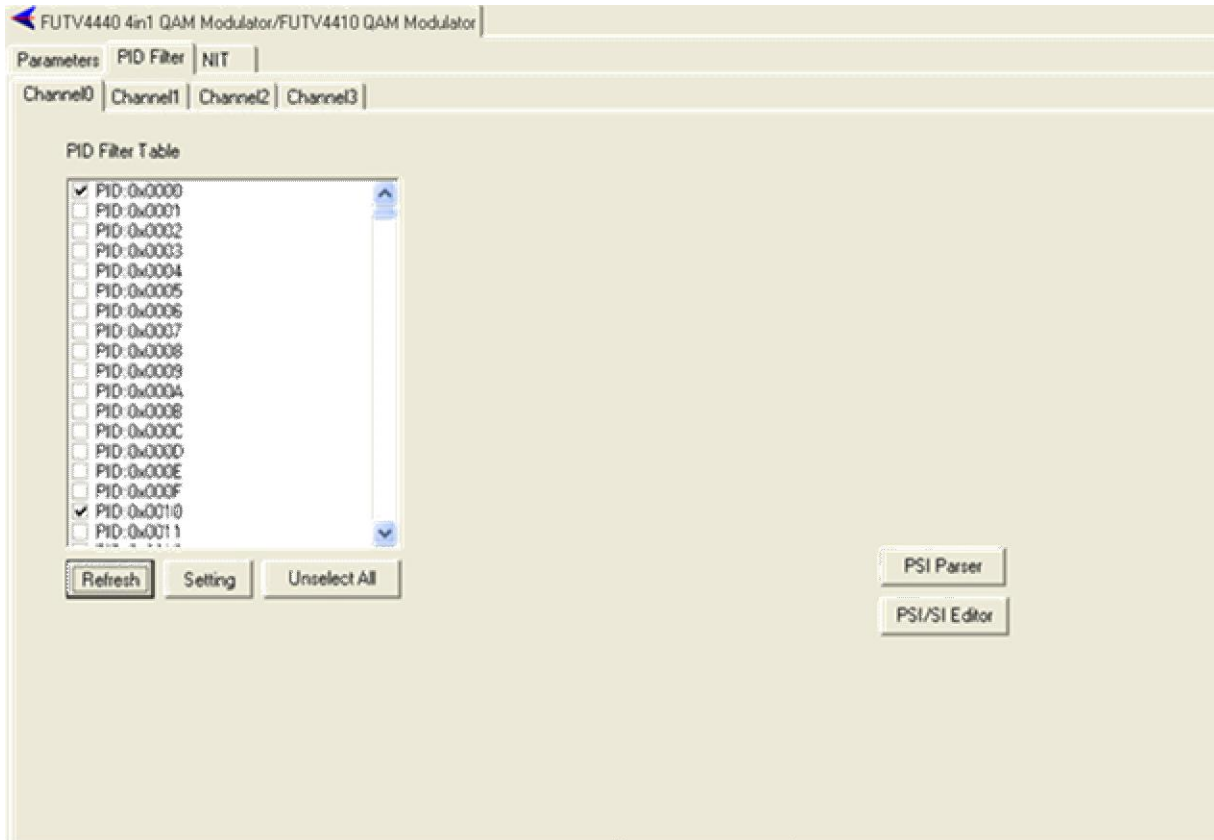
Ts Locked: Ch1, Ch2, Ch3, Ch4
 Overflow: Ch1, Ch2, Ch3, Ch4
 Effective Bitrate: 13.373568Mbps Ch1, 0Mbps Ch2, 0Mbps Ch3, 0Mbps Ch4
 Out Gain(dB): 0 Ch1, 0 Ch2, 0 Ch3, 0 Ch4

Frequency Mode: MODE 1, MODE 2, MODE 3, MODE 4, MODE 5

Table:

<input type="checkbox"/> CH0 PAT	<input type="checkbox"/> CH0 PMT	<input type="checkbox"/> CH0 SDT	<input type="checkbox"/> CH0 NIT
<input type="checkbox"/> CH1 PAT	<input type="checkbox"/> CH1 PMT	<input type="checkbox"/> CH1 SDT	<input type="checkbox"/> CH1 NIT
<input type="checkbox"/> CH2 PAT	<input type="checkbox"/> CH2 PMT	<input type="checkbox"/> CH2 SDT	<input type="checkbox"/> CH2 NIT
<input type="checkbox"/> CH3 PAT	<input type="checkbox"/> CH3 PMT	<input type="checkbox"/> CH3 SDT	<input type="checkbox"/> CH3 NIT

Get Set



Specification

Input	4 ASI input	FUTV4440B-A
	4 DVB-C tuner input	FUTV4440B-C
	4 DVB-S tuner input	FUTV4440B-S
	4 DVB-S2 tuner input	FUTV4440B-S2
Modulation parameters	QAM channel	4
	Standard	DVB-C(EN300 429)and ITU-T J.83A/ ITU-T J.83B/ ITU-T J.83C
	Symbol rate	5.0~9.0Mbps, 1kbps stepping
	Constellation	16 / 32 / 64 / 128 / 256QAM
	FEC	RS(204, 188)
RF Output	Interface	F type, 75 impedance
	Frequency range	30~960 MHz, 1kHz stepping
	Output level	-16dbm~0dbm(per QAM carrier) 0.5db stepping
	MER	40db
	ACLR	- 55 dBc
System	Support LCD display, keyboard operation, and NMS/SNMP	

	operation	
	English and Chinese version interface conversion	
	Support Software Upgrading through Ethernet	
General	Dimensions(W×L×H)	482mm×455mm×44.5mm
	Approx weight	3.2Kg
	Temperature range	0~45 (Operating),-20~80 (Storage)
	Power Requirements	AC 110V±10%, 50/60Hz
		AC 220V±10%, 50/60Hz
Power consumption	25W	

Order information

	FUTV4440B-A	FUTV4440B-C	FUTV4440B-S	FUTV4440B-S2
ASI input				
QAM(J.83 A/B/C) input				
DVB-S input				
DVB-S2 input				

Package List

- 1pc * FUTV4440B 4in1 QAM modulator
- 1pc * User's manual
- 1pc * Power cord
- 4pcs * ASI wire